



Super English

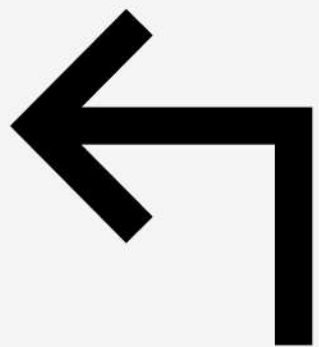
Level 3 - Unit 17

My City - 1

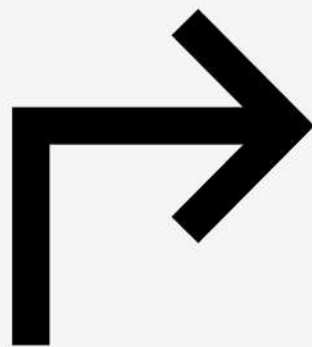




Vocabulary

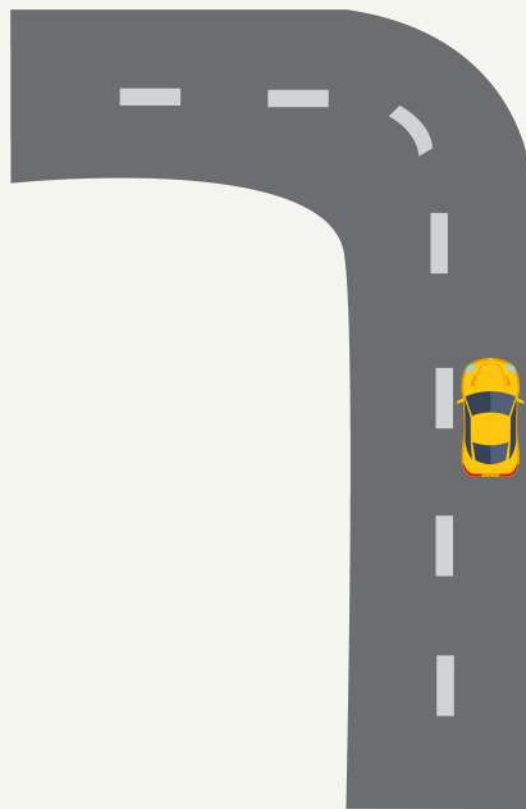


turn left

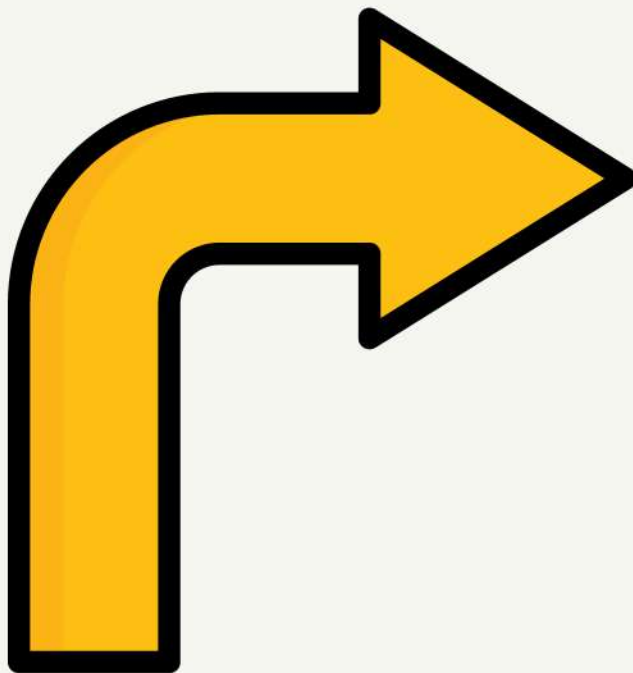


turn right

Does the
road turn
left or right?



Does the
arrow turn
left or right?



straight



This road sign means go **straight**.



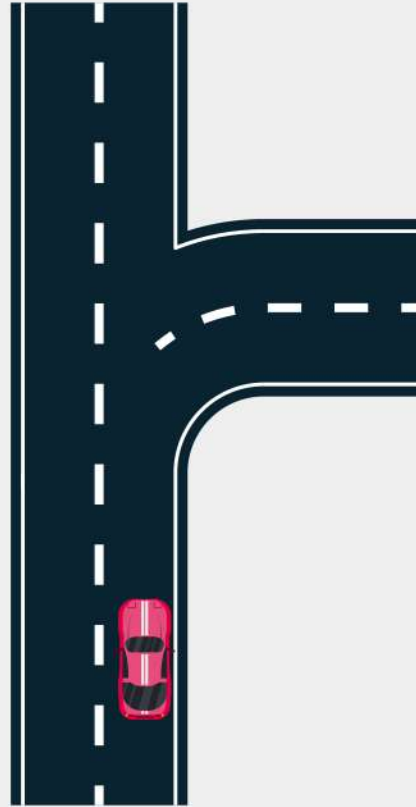
You can go **straight** or turn right.



Does this
road turn or
go straight?



Which ways
can the car
go?



directions



Directions
tell you which
way to go.



Directions
tell how to do
something.



Directions

Draw a line and help Bob find the park.

1. Go straight.
2. Turn right and keep going.
3. Turn right at the first street.
4. Go straight to the park.



left



straight



right



Directions

Draw a line and help Bob find the fire station.

1. Go straight.
2. Turn right and keep going.
3. Turn left at the 2nd street.
4. Go straight to the fire station.



left



straight



right



Grammar



Simple Past Tense Verbs

Where **do** you **play** sometimes?

I **play** at the park sometimes.



What **are** you **doing** now?

I **am playing** now.



What **did** you **do** yesterday?

I **played** outside yesterday.



Simple Past Tense Verbs

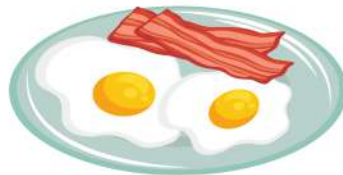
Where **did** you **play** yesterday?



Where **did** you **go** 2 days ago?



What **did** you **eat** for breakfast?





Phonics

'cher' sound



ture

picture

Read the rhyme!

We take a picture in the sun,

Nature shows us lots of fun.

A bird makes gestures in the tree,

The future smiles at you and me!





Reading

Anna Finds the Bakery

Anna walks with her dad on a sunny morning.

She is hungry. She wants a cookie.



Anna Finds the Bakery

"Where is the bakery?" she asks.

Her dad smiles. "Let's go and find it!"



Anna Finds the Bakery

They walk straight on Main Street.

Anna sees a park. Children are playing on the slide and swing.



Super English

See you
Next time!

